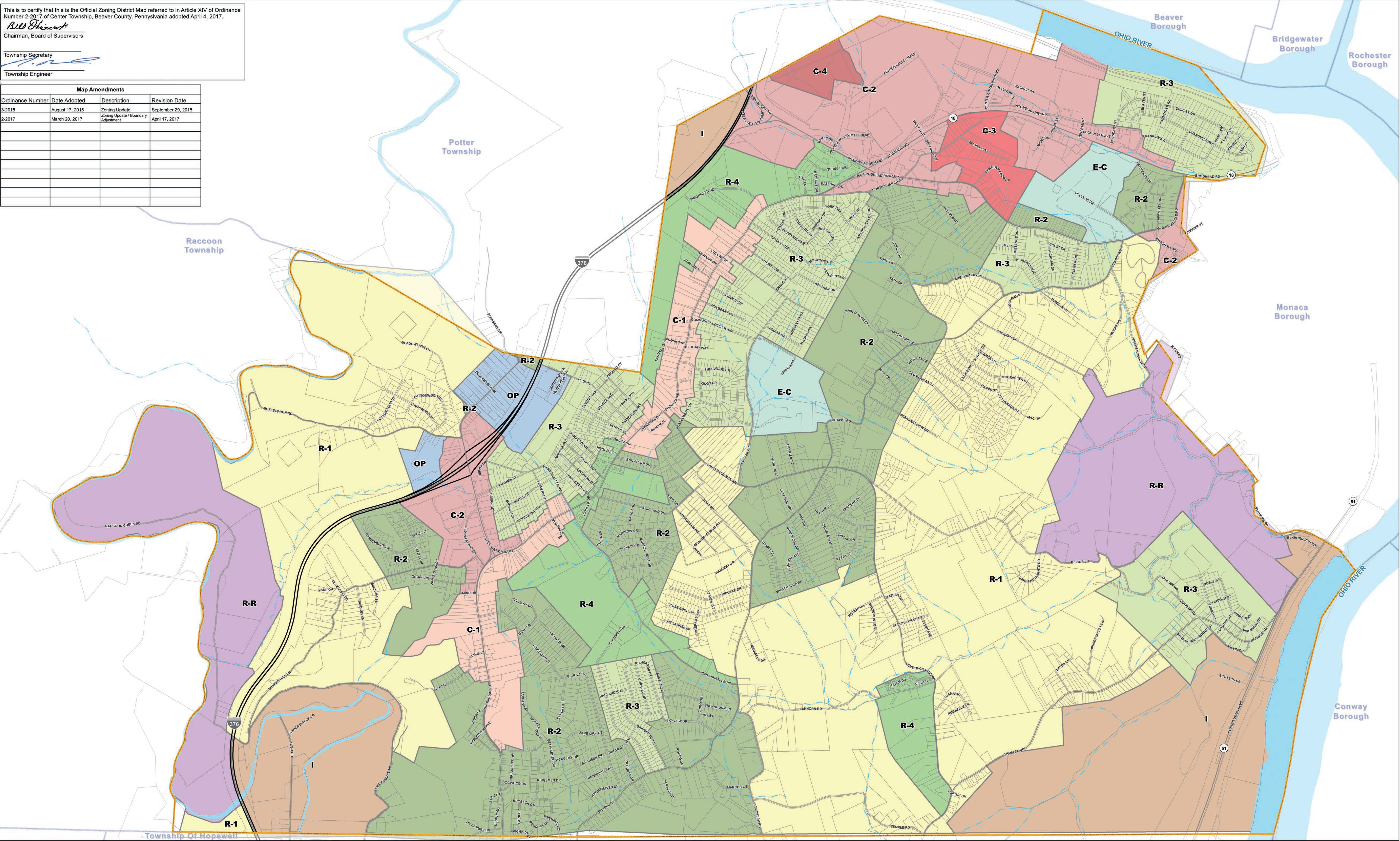


This is to certify that this is the Official Zoning District Map referred to in Article XIV of Ordinance Number 2-2017 of Center Township, Beaver County, Pennsylvania adopted April 4, 2017.

Bill Shewart
Chairman, Board of Supervisors

Township Secretary _____
Township Engineer _____

Map Amendments			
Ordinance Number	Date Adopted	Description	Revision Date
3-2015	August 17, 2015	Zoning Update	September 29, 2015
2-2017	March 20, 2017	Zoning Update / Boundary Adjustment	April 17, 2017



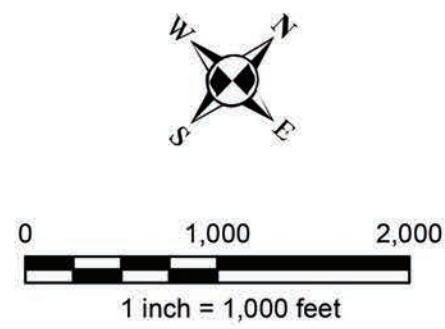


**Lennon, Smith, Souleret
Engineering, Inc.**
Civil Engineers and Surveyors

846 Fourth Avenue
Corasopis, PA 15108
(412) 264-4400
(412) 264-1200 Fax
info@lsse.com
www.lsse.com

- Zoning**

 - C-1 - Limited Commercial District
 - C-2 - General Commercial District
 - C-3 - Transitional Commercial District
 - C-4 - Mixed Use Commercial District
 - E-C - Educational Campus District
 - I-1 - Industrial
- O-P - Office Park District
 - R-1 - Low Density Residential District
 - R-2 - Suburban Residential District
 - R-3 - Urban Residential District
 - R-4 - Multifamily Residential District
 - R-R - Rural Residential District
- Parcels
 - Center Township Boundary
 - Municipal Boundary



**Official Zoning District Map
Center Township
Beaver County, Pennsylvania**